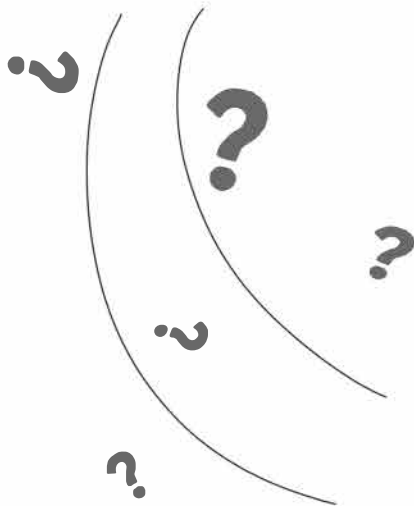
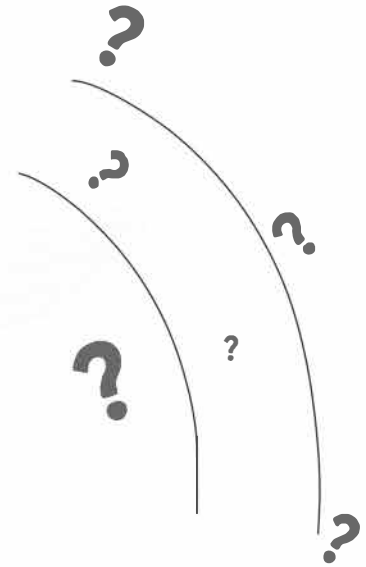
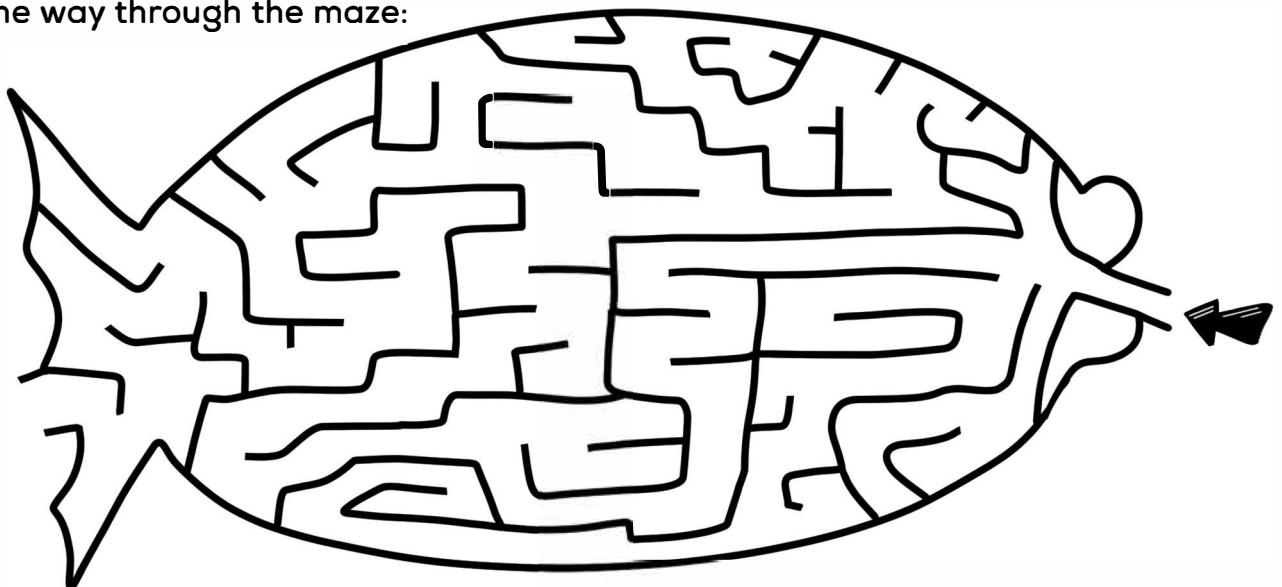


Find the 10 differences:



Find the way through the maze:



Break the code:

A	B	C	D	E	F	G	H	I	J	K	L	M
□	△	∇	∏	⊕	∩	∩	∇	∩	⊕	∩	∩	○

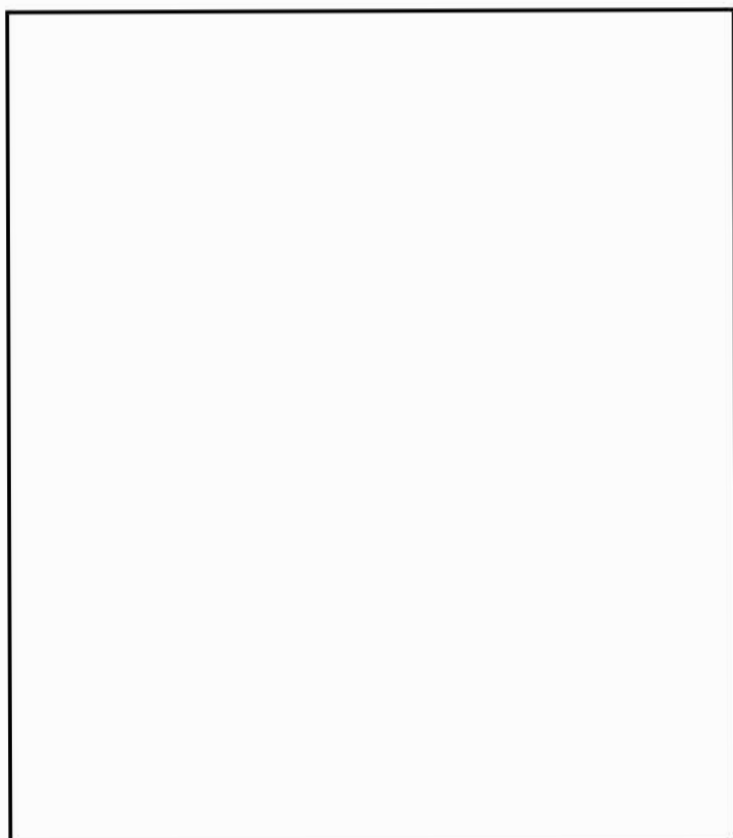
N	O	P	Q	R	S	T	U	V	W	X	Y	Z
∩	∩	∩	∩	∩	∩	∩	∩	∩	∩	∩	∩	∩

⊕ ∩ ⊕ ∩ ∩ ∩ ∩ has let ⊕ ∩ ∩ ∩ down, but the

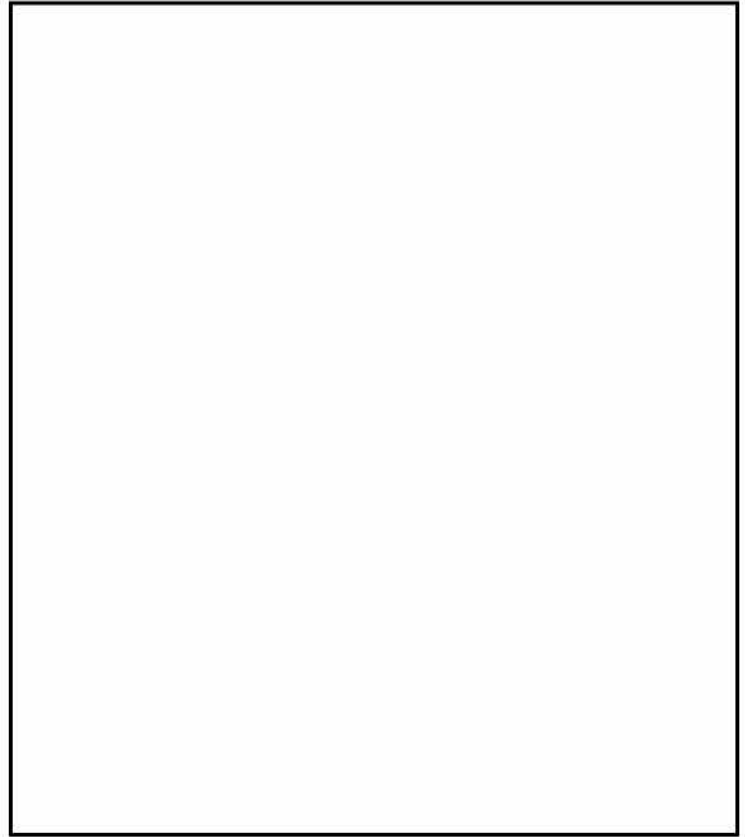
∩ ∩ ∩ ∩ ∩ tells us that ⊕ ∩ ∩ ∩ ∩ ∩ ∩ ∩ ∩ ∩ ∩ ∩

⊕ ∩ ⊕ ∩ ∩ ∩ ∩ back when they come to ⊕ ∩ ∩ ∩ ∩

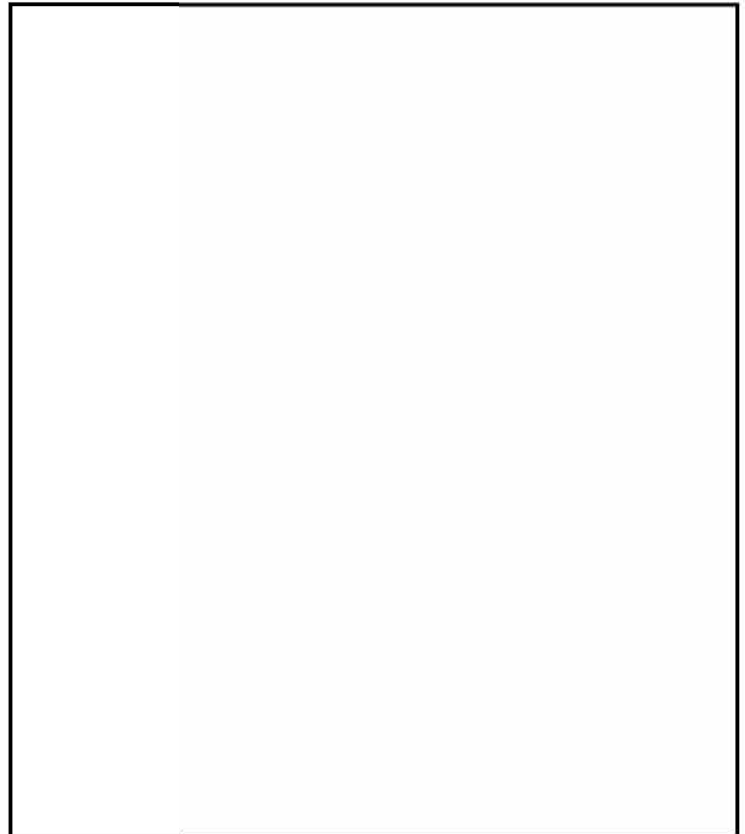
Draw the blind man able to see after Jesus healed him:



Draw the lame man jumping with happiness after Jesus healed him:



Draw leftover food and everyone full after Jesus fed them:



Find all the words

P	H	E	A	L	E	D	D	F	A	Q	T	G	C	N
O	K	Q	S	Y	L	A	M	B	S	Y	J	V	Y	K
W	F	S	R	S	P	F	G	C	H	Y	T	K	C	N
E	U	H	O	W	D	X	J	P	V	E	F	P	O	J
R	B	O	R	L	E	Q	H	U	N	G	R	Y	U	Y
W	S	E	E	Q	D	L	Z	Q	G	H	I	B	I	L
K	A	M	D	M	A	I	C	U	Q	T	E	F	E	W
M	J	L	D	D	I	N	E	O	E	I	N	O	T	T
F	M	J	K	S	L	U	E	R	M	D	D	L	R	G
N	U	U	Z	G	A	N	S	U	S	E	S	L	U	N
R	S	L	D	K	L	O	V	E	C	I	S	O	S	Y
Z	I	R	L	Z	S	J	X	F	P	V	E	W	T	D
F	C	W	B	E	J	F	I	S	H	I	N	G	G	X
L	K	G	F	B	L	I	N	D	S	H	E	E	P	P
V	V	J	J	H	R	V	F	K	J	G	I	F	V	E

- | | | |
|---------|---------|----------|
| FISHING | HUNGRY | LOVE |
| FOLLOW | FULL | LAMBS |
| SICK | BLIND | SHEEP |
| HEALED | MUD | WELCOMES |
| WALK | SEE | SOLDIERS |
| POWER | FRIENDS | TRUST |